



## MOLEX BP130 ADVANCED STRUCTURED CABLING DESIGN & INSTALLATION



**Duration:** 2 Days  
**VENUE:** To be Advised  
**Dates:** To Be Advised  
**Cost per delegate:** R3400,00 [excl. VAT] and includes the **training kit, lunch and refreshments** for the two days. **[All course fees to be paid upfront without exception. Seats are reserved upon receipt of payment.]**

### TRAINING OVERVIEW

Molex Connected Enterprise Solutions (CES) is a premier provider of revolutionary new and comprehensive network technologies focused on the development of IP-based solutions that support organizations choosing an Internet of Things strategy. An instructor-led, hands-on Technical Training workshop that enables Molex Connected Enterprise Solutions Design and Installation professionals to specify, position, design, estimate, install, and support Molex Connected Enterprise Solutions' Data Transport Solutions, including its Copper, Fiber, and plug & play solutions.

Theory is supplemented by exercises in which participants complete designs, see demonstrations using installation tools readily available in the industry, handle required products, and test installed channels. The 2-day standards-based training course covers all the basic Technical skills, terminology and to successfully install and test Molex Connected Enterprise Solutions (CES) structured cabling products to the required Technical specifications of the Molex Premise Networks, to guarantee a 25 Year Application & Performance Warranty System.

A comprehensive overview of international standards such as ANSI/TIA, ISO/IEC, CENELEC, and AS/NZS is provided. The course covers all the technology up to & including Category 6A/Class FA.

### WHO SHOULD ATTEND?

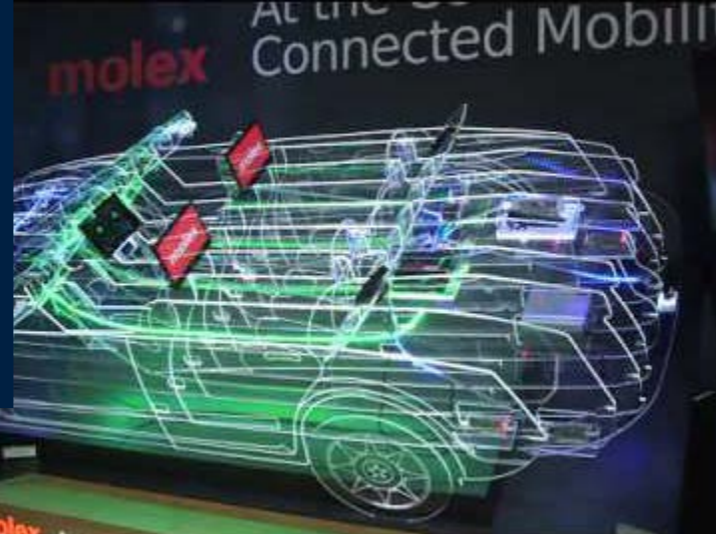
#### WHO SHOULD ATTEND (Course Prerequisite & Pre-activity)

- Basic knowledge in structure cabling
- Basic knowledge and use of a Molex Connected Enterprise Solutions-approved structured cabling tester and termination tools

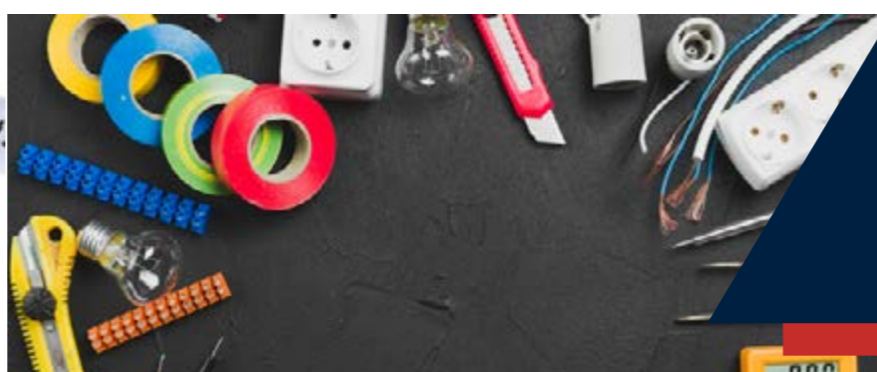
#### COURSE OBJECTIVES

Upon completion of the course, participants will demonstrate competency to:

- Position the solutions confidently with customers
- Select correct solution, media type and performance level for the customer's application. Install, test, offer maintenance and support the solutions, including how to (a) properly lay and inter connect the medium, (b) test installed channels with industry-standard equipment, and (c) methodically detect and isolate faults in installations.



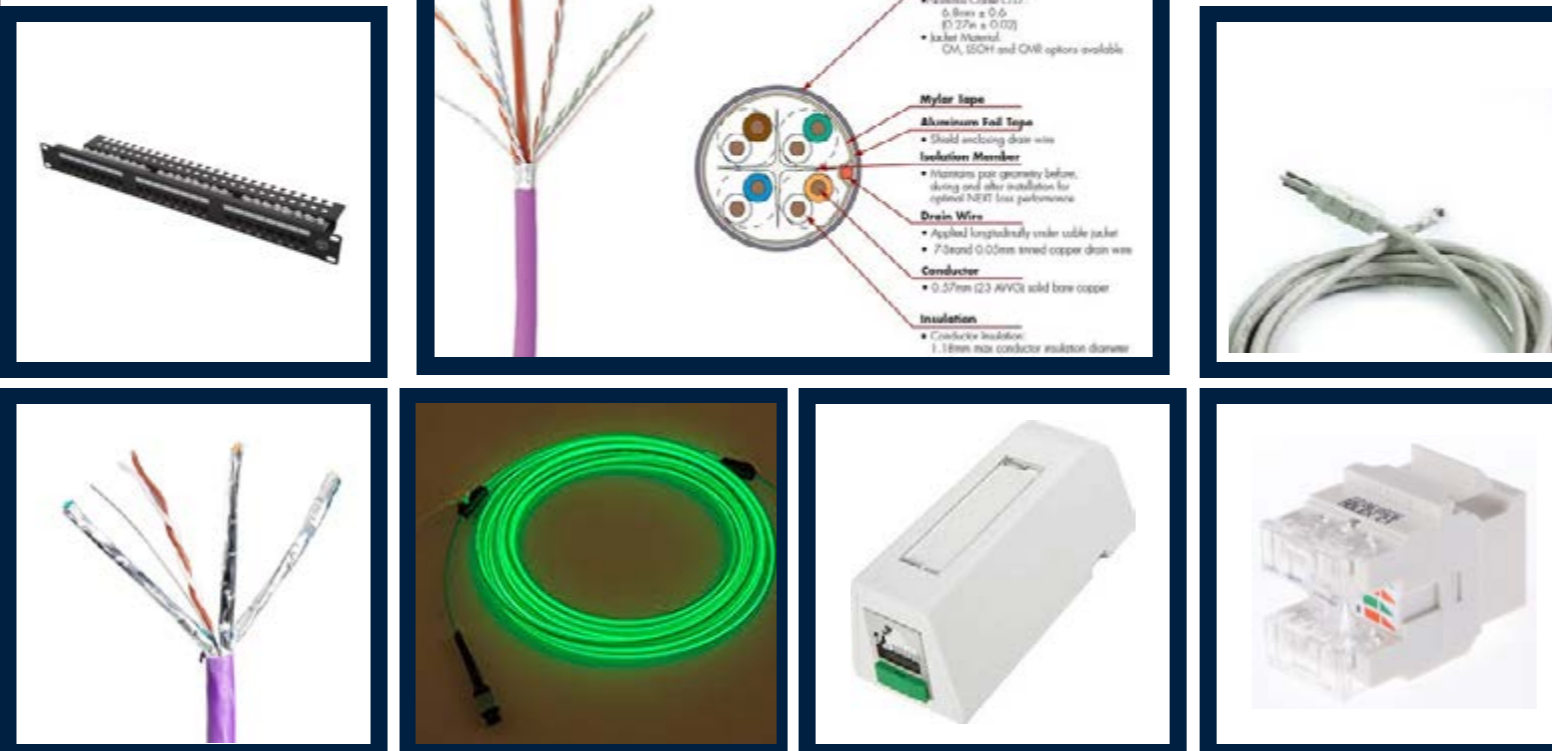
- Understand the ANSI/TIA and ISO/IEC or regional equivalent technical standards applicable to structured cabling
- Understand the architecture and design of industry-standard structured cabling systems
- Understand the evolution of the physical network and its interface and influence on the structured cabling system, including the OSI Model and LAN topologies, especially Ethernet
- Understand theory, electrical characteristics, construction, termination of Copper systems including Category 6 / Class E and Category 6 Augmented / Class EA
- Understand theory, optical characteristics, construction, and termination of Fiber systems
- Train proper design, installation, documentation, and testing procedures including bend radii of various media, wiremap, patching field, separation from power or hazardous sources, cable pull limits and other pull guidelines, working with fire stops, and proper labeling per the industry standard(s)



### TRAINING OBJECTIVES

- Understand Molex Connected Enterprise Solutions and its vision, its Copper and Fiber Optic, its MIIM™G3 solution
- Understand Molex Connected Enterprise Solutions' Data Transport Solutions and the unique techniques and procedures required to design, install, and test them
- Advantages of Molex Connected Enterprise Solutions' shielded Cat-6A solution for 10Gigabit performance
- Properly demonstrated termination for Molex Connected Enterprise Solutions' Cat 6/6A jacks and SC Fiber connector
- Understand Molex Connected Enterprise Solutions' plug & play solutions
- Fiber Optic ModLink and its application in a data center

### GALLERY OVERVIEW



### COURSE OUTLINE

- **MODULE 00** – INTRODUCTION
- **MODULE 01** – MOLEX CONNECTED ENTERPRISE SOLUTIONS OVERVIEW
- **MODULE 02** – SCS DESIGN CONSIDERATIONS / STANDARDS OVERVIEW
- **MODULE 03a** – MOLEX CONNECTED ENTERPRISE SOLUTIONS COPPER SOLUTIONS
- **MODULE 03b** – SCS TERMINATION & INSTALLATION – COPPER
- **MODULE 03c** – SCS TESTING & EQUIPMENT – COPPER
- **MODULE 04a** – MOLEX CONNECTED ENTERPRISE SOLUTIONS FIBER OPTIC SOLUTIONS
- **MODULE 04b** – SCS TERMINATION & INSTALLATION – FIBER OPTIC
- **MODULE 04c** – SCS TESTING & EQUIPMENT – FIBER OPTIC
- **MODULE 05** – SCS SYSTEMS FOR COMMERCIAL BUILDINGS APPLICATIONS
- **MODULE 06** – SCS SYSTEMS FOR OUTSIDE PLANT APPLICATIONS
- **MODULE 07** – SCS SYSTEMS FOR DATACENTER APPLICATIONS
- **MODULE 08** – SCS SYSTEMS FOR EDUCATIONAL AND HEALTHCARE FACILITIES
- **MODULE 09** – SCS SYSTEMS FOR PoE / PoE+ / PoE++ / UPoE APPLICATIONS
- **MODULE 10** – SCS SYSTEMS FOR ZONE CABLING AND IOT APPLICATIONS
- **MODULE 11** – SCS SYSTEMS FOR WIRELESS LAN APPLICATIONS
- **MODULE 12a** – SCS SYSTEMS FOR PON LAN APPLICATIONS
- **MODULE 12b** – SCS SYSTEMS TESTING REQUIREMENTS FOR PON LAN APPLICATIONS
- **MODULE 13** – SCS SYSTEMS FOR HD BASE-T AND NBASE-T APPLICATIONS
- **MODULE 14** – SCS SYSTEMS FOR 25-40-50-100G-200Gb/s and 400Gb/s APPLICATIONS
- **MODULE 15** – MOLEX CONNECTED ENTERPRISE SOLUTIONS WARRANTY PROGRAM
- **MODULE 16** – DEVELOPMENTAL TRAINING & COURSE EVALUATION

[2-year Molex Connected Enterprise Solutions certification upon attendance of complete course and a passing grade on exam]



### BANKING DETAILS

**Bank** : Absa  
**Account Type** : Cheque Account  
**Branch** : Newton Park  
**Account No.** : 4097 1950 18

#### VERY IMPORTANT

**Your reference** : MCES – COMPANY NAME  
**Email Proof of Payment to** – enquiry@siveacademy.africa

### CONTACT US

info@siveacademy.africa  
 enquiry@siveacademy.africa  
 +27 (0)41 364 0201  
 No.17 Pickering Street, Newton Park, 6045  
 www.siveacademy.africa



### FOLLOW US